

NEW ZEALAND PINE

~ YOUR FUTURE SOLUTION

Welcome to the second edition of the New Zealand Pine User

Guide – a semi-technical reference manual specifically designed

for our many overseas customers.

Based on the hugely successful New Zealand Radiata Pine User Manual, first published in 1992, the new edition includes:

- updates of all original technical chapters,
- new performance tables, graphs and charts,
- new sections to cater for the increasing diversity of application,
- full-colour photography throughout,
- a new, more user-friendly design.

Our scientists, technicians and forest industry professionals have over the past 60 years accumulated more in-depth knowledge of New Zealand pine (*Pinus radiata*) than any other country. Many of those experts have contributed directly to this publication.

We are confident, therefore, that whether you are a regular or first-time user, this guide will add significantly to the value you derive from the product.

An estimated 200,000 people read the first edition – many in conjunction with trade promotions and in-market technical seminars and workshops conducted by New Zealand pine exporters.





Comments received and closer observation of the special needs and conditions of markets throughout the Asia-Pacific region have been taken into account in compiling the second edition.

In a world where many traditional sources of industrial wood have been depleted or are declining, New Zealand is gaining international recognition as a supplier of a sustainable and expanding resource of high quality wood.

New Zealand pine is, increasingly, the natural choice for buyers in Pacific Rim countries looking for an alternative species offering versatility of application and quality performance.

SPECIAL FEATURES

It Is Natural – New Zealand pine solidwood products are created by selective sawing and processing, with low manufacturing energy inputs. The result is a natural wood product from a renewable resource.

It Is Sustainable – The planted forests of New Zealand are expanding and maturing at a rate which provides an increasing volume of plantation pine for the future. Extensive new plantings are increasing the overall yield and providing security of supply.

It Is Advanced – A well established process of genetic improvement and advanced forest management expertise produces a wood resource with superior yield and consistent characteristics.

It Is Strong – The strength of New Zealand pine compares favourably with most traditional construction lumber. Tailored cutting patterns ensure that the high-strength wood fibre near the outside of the log is sawn for strength applications.

continued overleaf

This publication outlines the

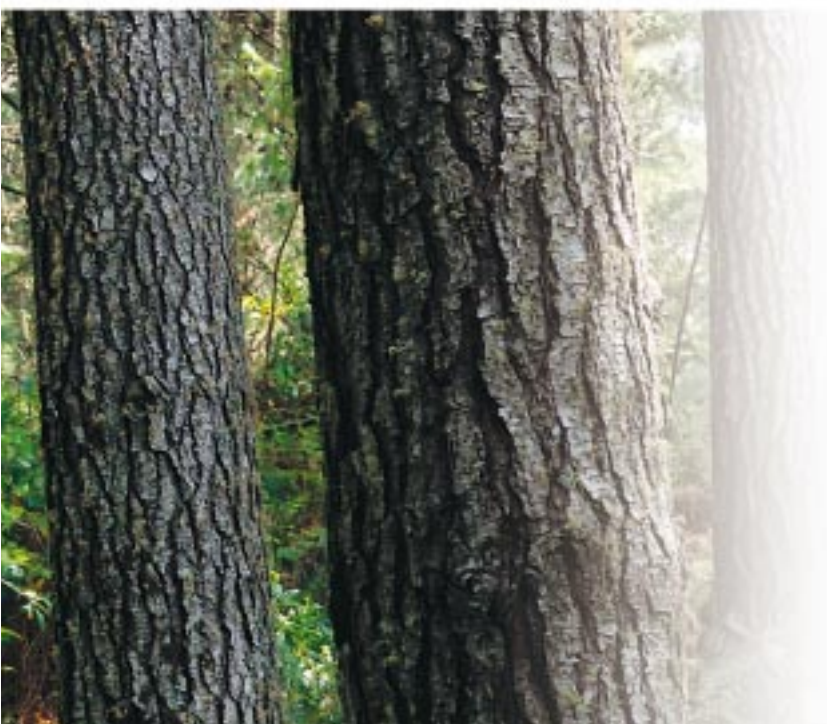
suitability of New Zealand

pine for a wide range of uses

proven through continuing

research & experience over

half a century.



NEW ZEALAND PINE ~ YOUR FUTURE SOLUTION



It Is Adaptable – For appearance and interior applications, New Zealand pine is kiln dried to produce stable and long-lasting products. Preservative treatment ensures longevity across an impressive range of external applications.

It Is Versatile – New Zealand pine is excellent for an impressive range of structural and appearance applications – from clearwood components for the furniture industry to housing products and highly engineered structures.

THE FUTURE SOLUTION

Market trends toward the use of more composite products in engineered applications, the ‘additions and alternations’ business, hardwood substitution and in direct sales to consumers all signal excellent potential for New Zealand pine.

In keeping with those more complex uses is the need for good and clear communication between manufacturer, distributor and

customer to ensure the performance characteristics and wood properties of the product are used to best advantage.

The New Zealand Pine User Guide has been designed to assist with this communication.

INTERNATIONAL STANDARDS

To ensure full benefit is gained in importing countries, it is important that the wood is processed efficiently and used correctly. Wherever possible, we have shown where New Zealand pine products comply with international standards and, more particularly, how it can be processed. We have been greatly assisted in that respect by the scientists and staff of the New Zealand Forest Research Institute and the New Zealand Ministry of Forestry. Both agencies have enjoyed a long association with universities, government laboratories and industrial companies worldwide. They also have direct experience of wood industries in many countries.

FURTHER INFORMATION

For further information on products, processes and technology referred to in this publication, we offer the following recommended points of contact:

COMMERCIAL ENQUIRIES

Nearest regional office of the

New Zealand Trade Development Board:

- Tokyo – Japan, Korea & China
- Singapore – Asean countries, Taiwan and Vietnam
- Los Angeles – North America & Mexico
- Santiago – South America
- Hamburg – Europe
- Sydney – Australia
- Wellington – New Zealand

TECHNICAL ENQUIRIES

**Manager – Wood Processing Division
New Zealand Forest Research Institute**
Private Bag 3020, Rotorua, New Zealand
Fax: +64-7-347 9380
Phone: +64-7-347 5899

**The Ministry of Forestry
Forestry Development Group**
PO Box 1340, Rotorua, New Zealand
Fax: +64-7-347 7173
Phone: +64-7-348 0089

REMANUFACTURING ENQUIRIES

NZ Pine Remanufacturers’ Association
PO Box 256, Motueka, New Zealand
Fax: +64-3-528 6220
Phone: +64-3-528 6006